

Spec Sheet

# H-332 & PLM 15000 E



# H-332 & PLM 15000E



## Principal Particulars

Built	Barge 2009 Crane 2020
Barge Class	Lloyd's Register AT pontoon Unrestricted Navigation
Crane Class	TUV according to EN 13852-2 (2004)
Flag	Panama
Barge Dimensions	L 100 m x B 33 m x H 7.6 m
Draft	Min 1.5 m Max 6.1 m
Air draught sailing	Minimum 7 m from Deck Normal 47 m total River 35 m (with back backmast partial lowered)
Nominal free deck space	2,500 m <sup>2</sup>
Deadweight Lightweight	14,000 t / 4,000 t
Deckload	15 t/m <sup>2</sup>
Frame spacing	2.5 m

## Crane Capacities

54.6 m boom	Cap. 660 ton @ 18 to 23 m, to max 156 ton @ 55.5 m
66.8 m boom	Cap. 600 ton @ 20 to 23 m, to max 110 ton @ 66.1 m
79.0 m boom	Cap. 445 ton @ 22.2 to 25 m, to max 80 ton @ 76.6 m
91.1 m boom	Cap. 341 ton @ 24.3 to 33 m, to max 58 ton @ 87.2 m
Hoisting speed	Main 2.8 m/min - 6.8 m/min Aux 22 m/min - 110 m/min
Swing speed	From 0.15 to 0.36 RPM

## Machinery

Main supply crane	1 x 1,800 kva Mitsubishi 400V, 50Hz
Ballast system	Manually operated valves in pump room
Ballast pump	1 x 1,000 m <sup>3</sup> /hr (electric)
Bilge pump	1 x 15 m <sup>3</sup> /hr (electric)

## Deck Equipment

Bridle recovery winch	1 x 10 t x 9 m/min	Navigation lights	1 set of three lights, Solar powered
Mooring/Anchor winches available	2 x electric 10 t mooring Up to 8 drum 60 t anchoring Up to 4 drum 100 t anchoring	Bollards & chocks	10 x double bollard SWL 50 t
Towing brackets	4 x SWL 138 t 1 x stern SWL 100 t	Anchor	3,040 t HHP stockless bower anchor, Not installed

## Hapo International Barges B.V.

Details believed to be correct, but not guaranteed. Specification subject to change without notice.

### Office Address

Sluisjesdijk 145  
3087 AG Rotterdam  
The Netherlands

### Postal Address

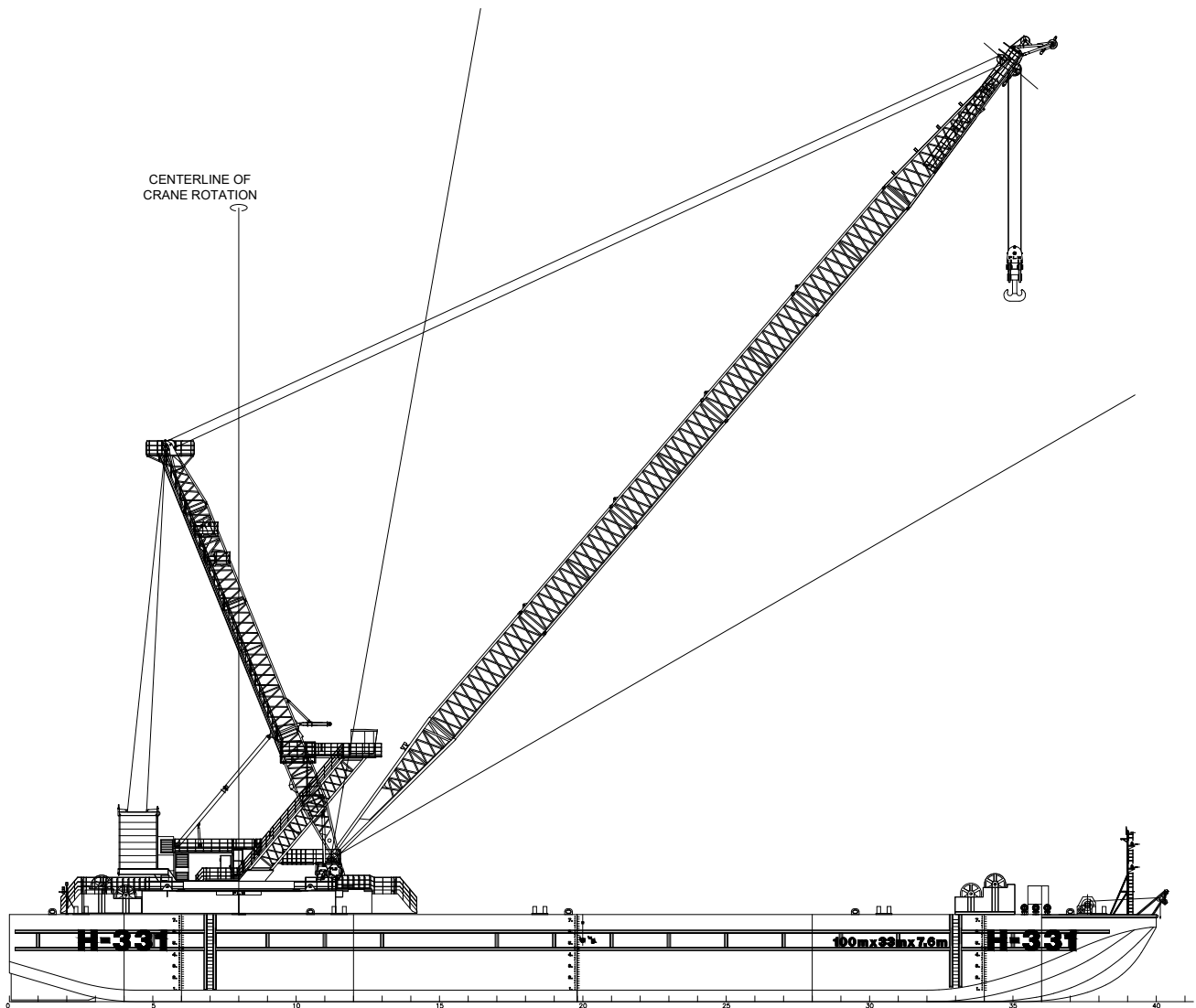
PO Box 5133  
3008 AC Rotterdam  
The Netherlands

CC: 23076161  
VAT: NL008589288B01

+31 10 7600 111

info@hapobarges.com

# H-332 & PLM 15000E



## Hapo International Barges B.V.

Details believed to be correct, but not guaranteed. Specification subject to change without notice.

### Office Address

Sluisjesdijk 145  
3087 AG Rotterdam  
The Netherlands

### Postal Address

PO Box 5133  
3008 AC Rotterdam  
The Netherlands

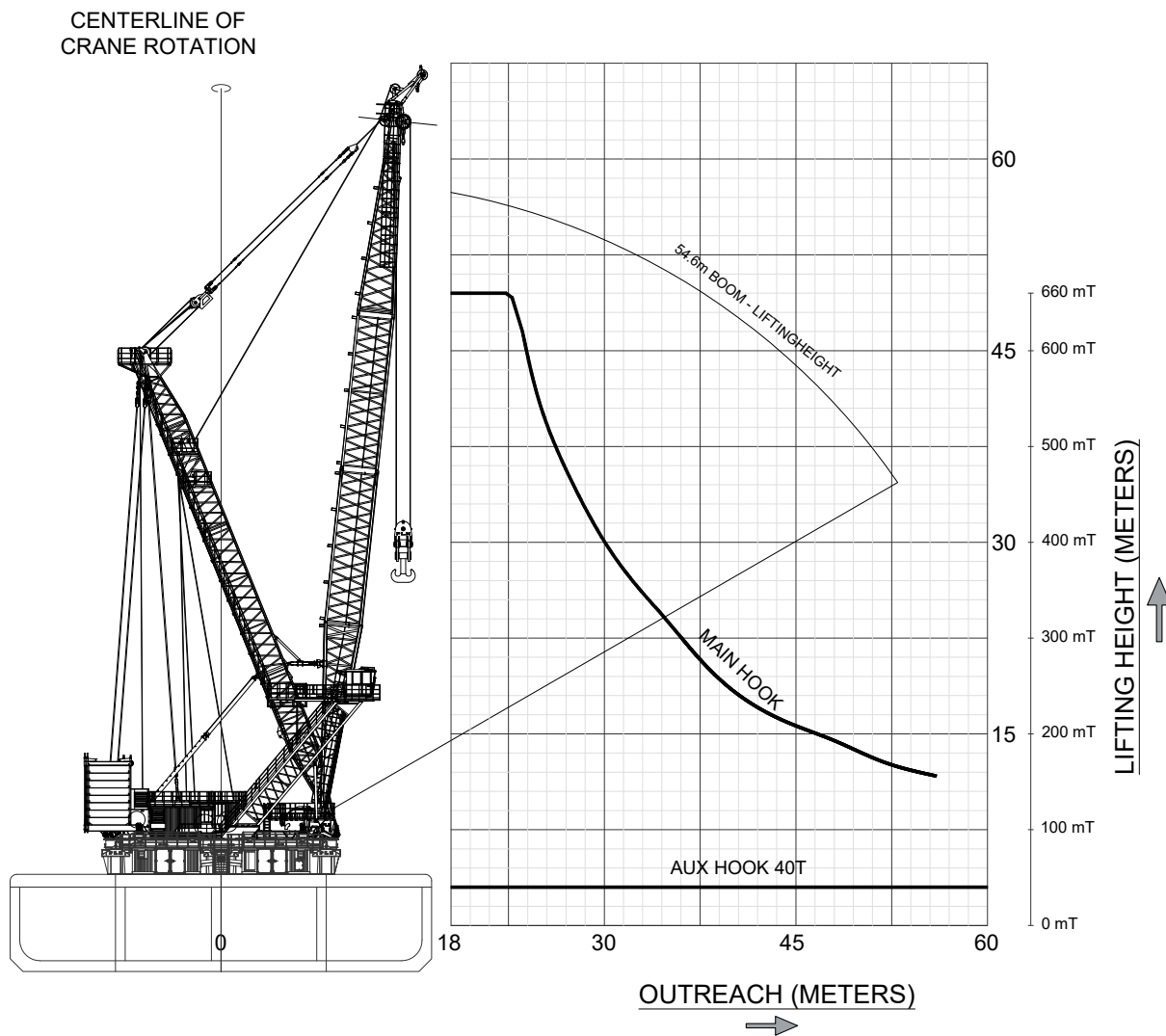
CC: 23076161  
VAT: NL008589288B01

 +31 10 7600 111

 info@hapobarges.com

# H-332 & PLM 15000E

## Capacity Chart for Crane "PLM 15000E on Barge H-332" 54.6 m Boom



### Hapo International Barges B.V.

Details believed to be correct, but not guaranteed. Specification subject to change without notice.

#### Office Address

Sluisjesdijk 145  
3087 AG Rotterdam  
The Netherlands

#### Postal Address

PO Box 5133  
3008 AC Rotterdam  
The Netherlands

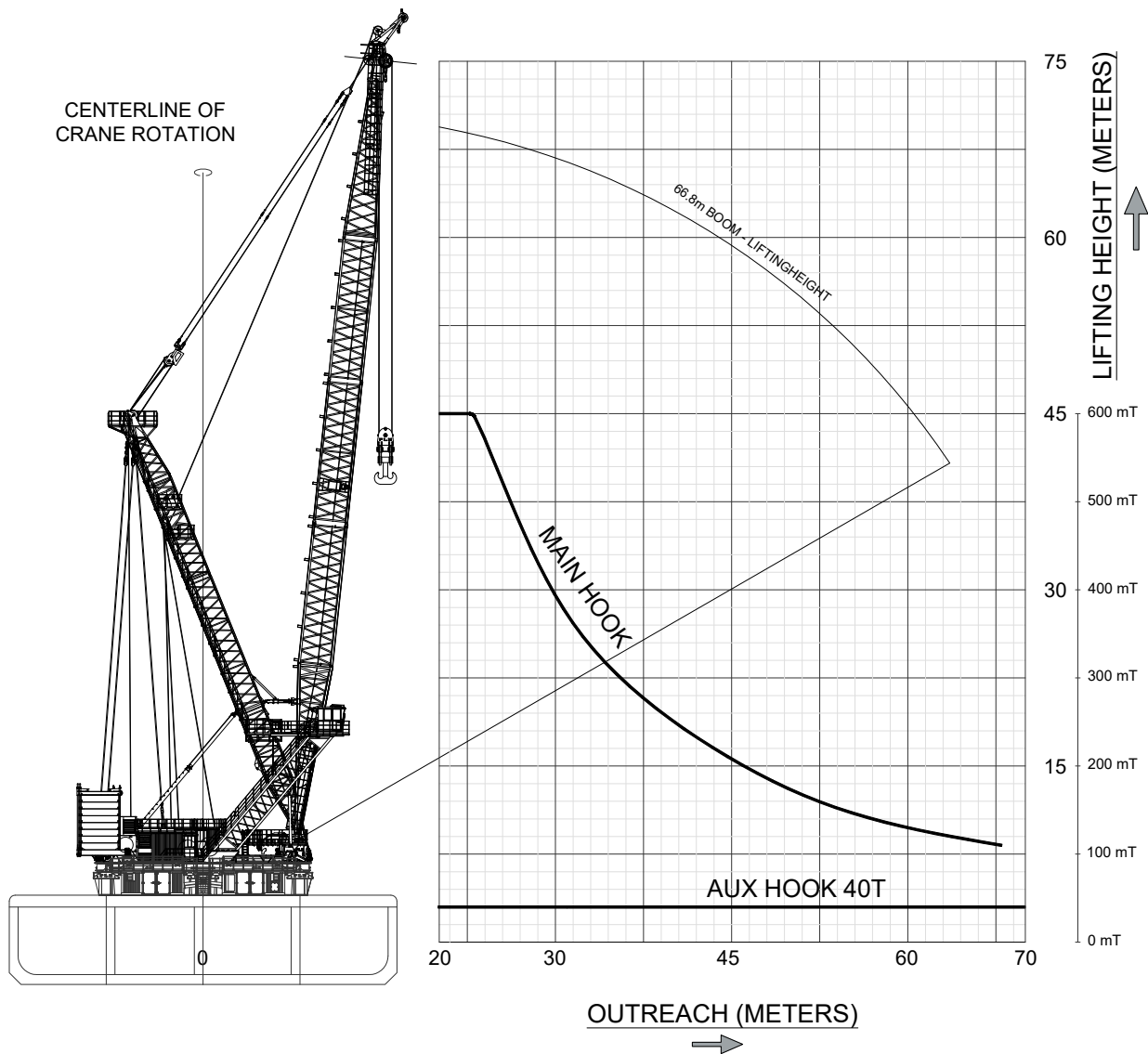
CC: 23076161  
VAT: NL008589288B01

+31 10 7600 111

info@hapobarges.com

# H-332 & PLM 15000E

## Capacity Chart for Crane "PLM 15000E on Barge H-332" 66.8 m Boom



### Hapo International Barges B.V.

Details believed to be correct, but not guaranteed. Specification subject to change without notice.

#### Office Address

Sluisjesdijk 145  
3087 AG Rotterdam  
The Netherlands

#### Postal Address

PO Box 5133  
3008 AC Rotterdam  
The Netherlands

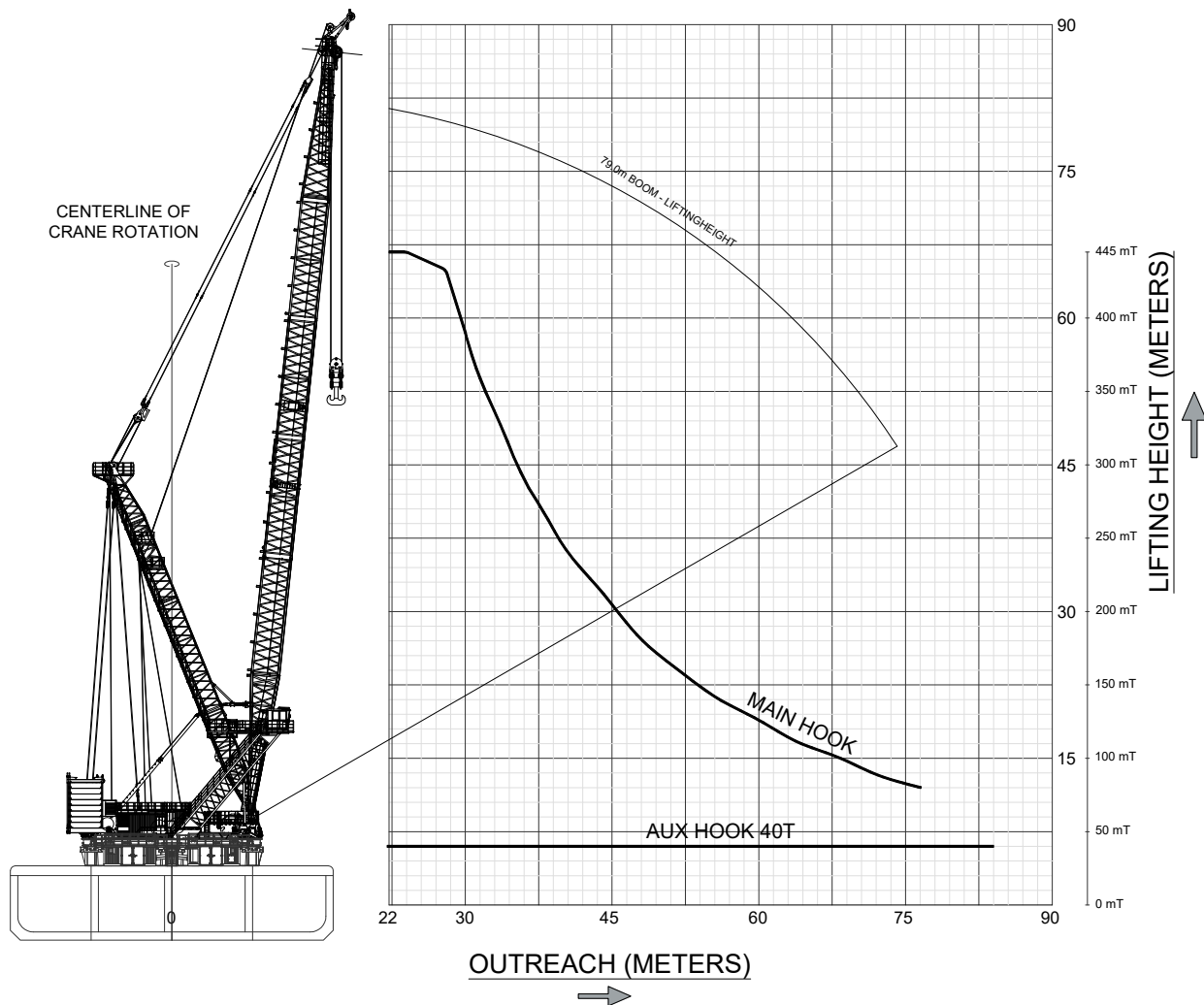
CC: 23076161  
VAT: NL008589288B01

+31 10 7600 111

info@hapobarges.com

# H-332 & PLM 15000E

## Capacity Chart for Crane "PLM 15000E on Barge H-332" 79.0 m Boom



### Hapo International Barges B.V.

Details believed to be correct, but not guaranteed. Specification subject to change without notice.

#### Office Address

Sluisjesdijk 145  
3087 AG Rotterdam  
The Netherlands

#### Postal Address

PO Box 5133  
3008 AC Rotterdam  
The Netherlands

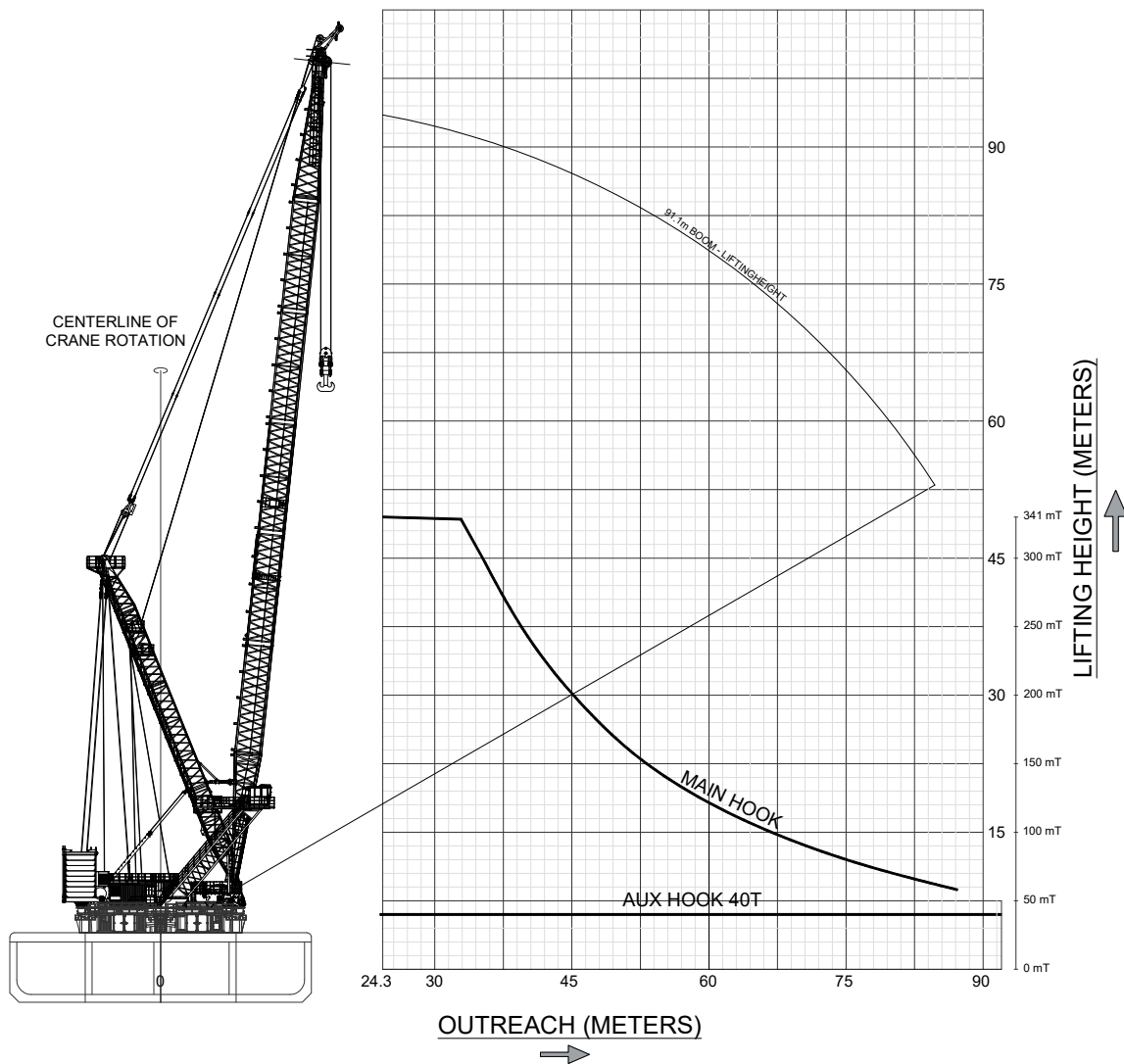
CC: 23076161  
VAT: NL008589288B01

+31 10 7600 111

info@hapobarges.com

# H-332 & PLM 15000E

## Capacity Chart for Crane "PLM 15000E on Barge H-332" 91.1 m Boom



### Hapo International Barges B.V.

Details believed to be correct, but not guaranteed. Specification subject to change without notice.

#### Office Address

Sluisjesdijk 145  
3087 AG Rotterdam  
The Netherlands

#### Postal Address

PO Box 5133  
3008 AC Rotterdam  
The Netherlands

CC: 23076161  
VAT: NL008589288B01

+31 10 7600 111

info@hapobarges.com

**Hapo International Barges B.V.**

Details believed to be correct, but not guaranteed. Specification subject to change without notice.

**Office Address**

Sluisjesdijk 145  
3087 AG Rotterdam  
The Netherlands

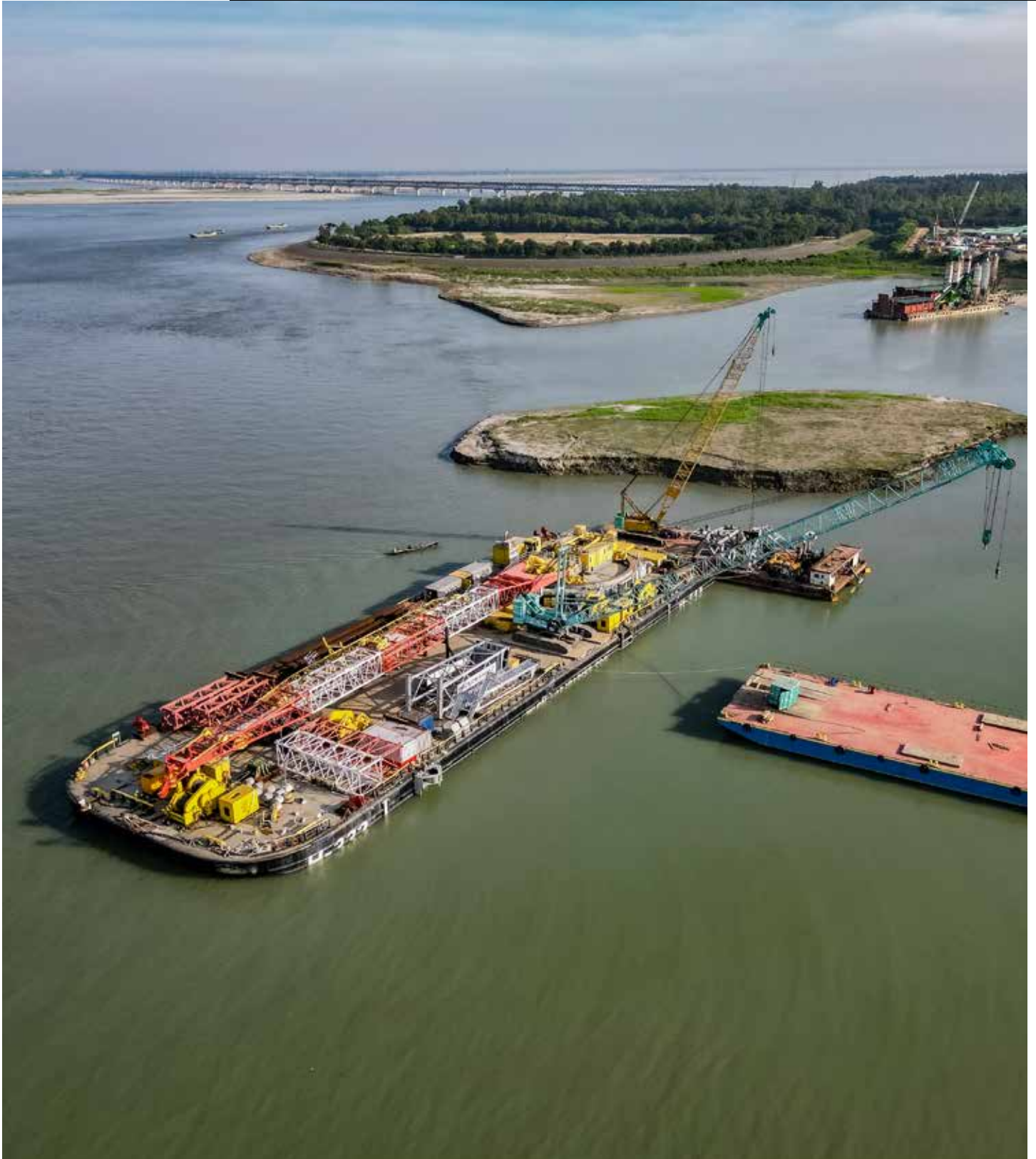
**Postal Address**

PO Box 5133  
3008 AC Rotterdam  
The Netherlands

CC: 23076161  
VAT: NL008589288B01

 +31 10 7600 111

 [info@hapobarges.com](mailto:info@hapobarges.com)

**Hapo International Barges B.V.**

Details believed to be correct, but not guaranteed. Specification subject to change without notice.

**Office Address**

Sluisjesdijk 145  
3087 AG Rotterdam  
The Netherlands

**Postal Address**

PO Box 5133  
3008 AC Rotterdam  
The Netherlands

CC: 23076161  
VAT: NL008589288B01

 +31 10 7600 111

 [info@hapobarges.com](mailto:info@hapobarges.com)

**Hapo International Barges B.V.**

Details believed to be correct, but not guaranteed. Specification subject to change without notice.

**Office Address**

Sluisjesdijk 145  
3087 AG Rotterdam  
The Netherlands

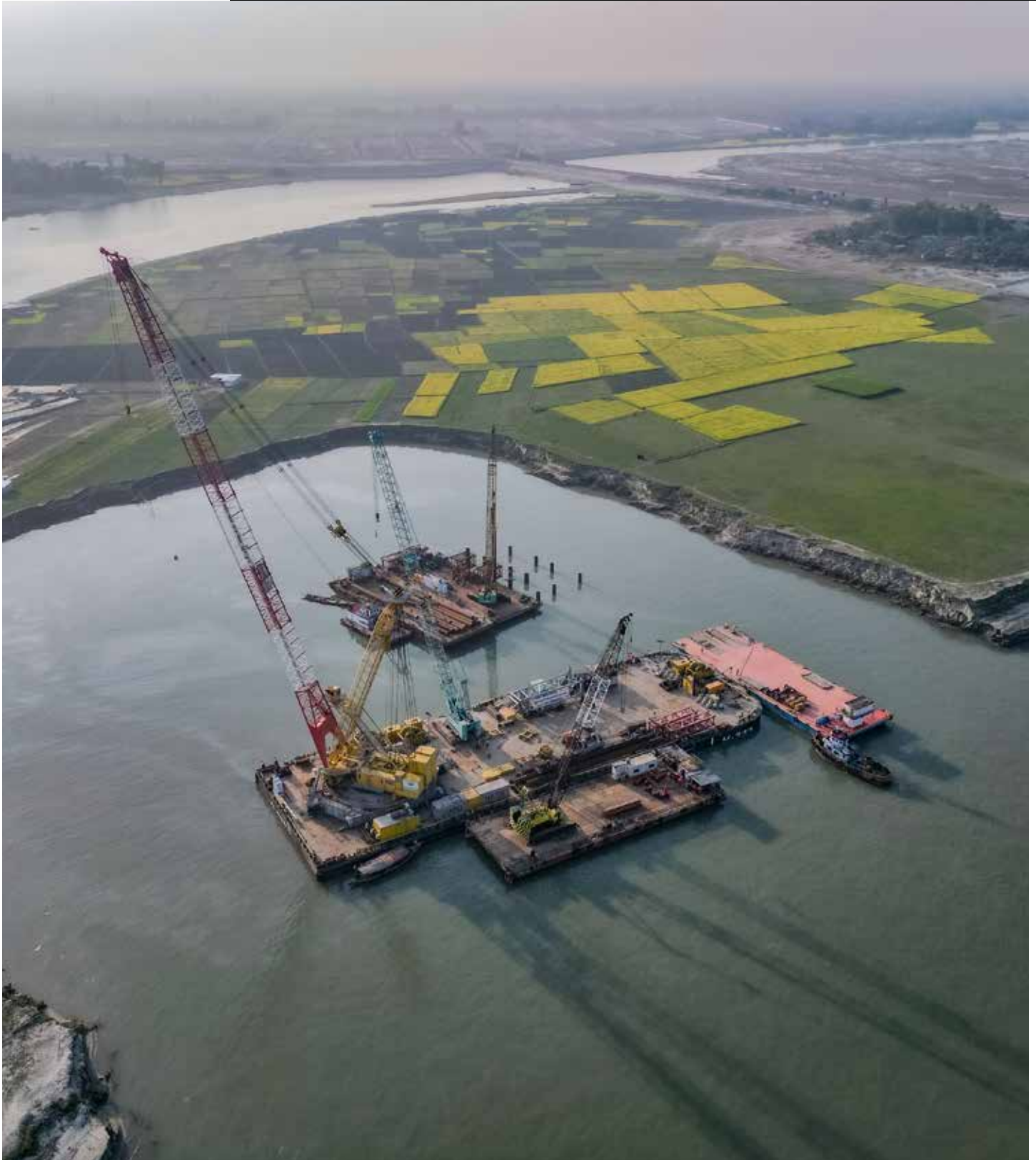
**Postal Address**

PO Box 5133  
3008 AC Rotterdam  
The Netherlands

CC: 23076161  
VAT: NL008589288B01

 +31 10 7600 111

 [info@hapobarges.com](mailto:info@hapobarges.com)

**Hapo International Barges B.V.**

Details believed to be correct, but not guaranteed. Specification subject to change without notice.

**Office Address**

Sluisjesdijk 145  
3087 AG Rotterdam  
The Netherlands

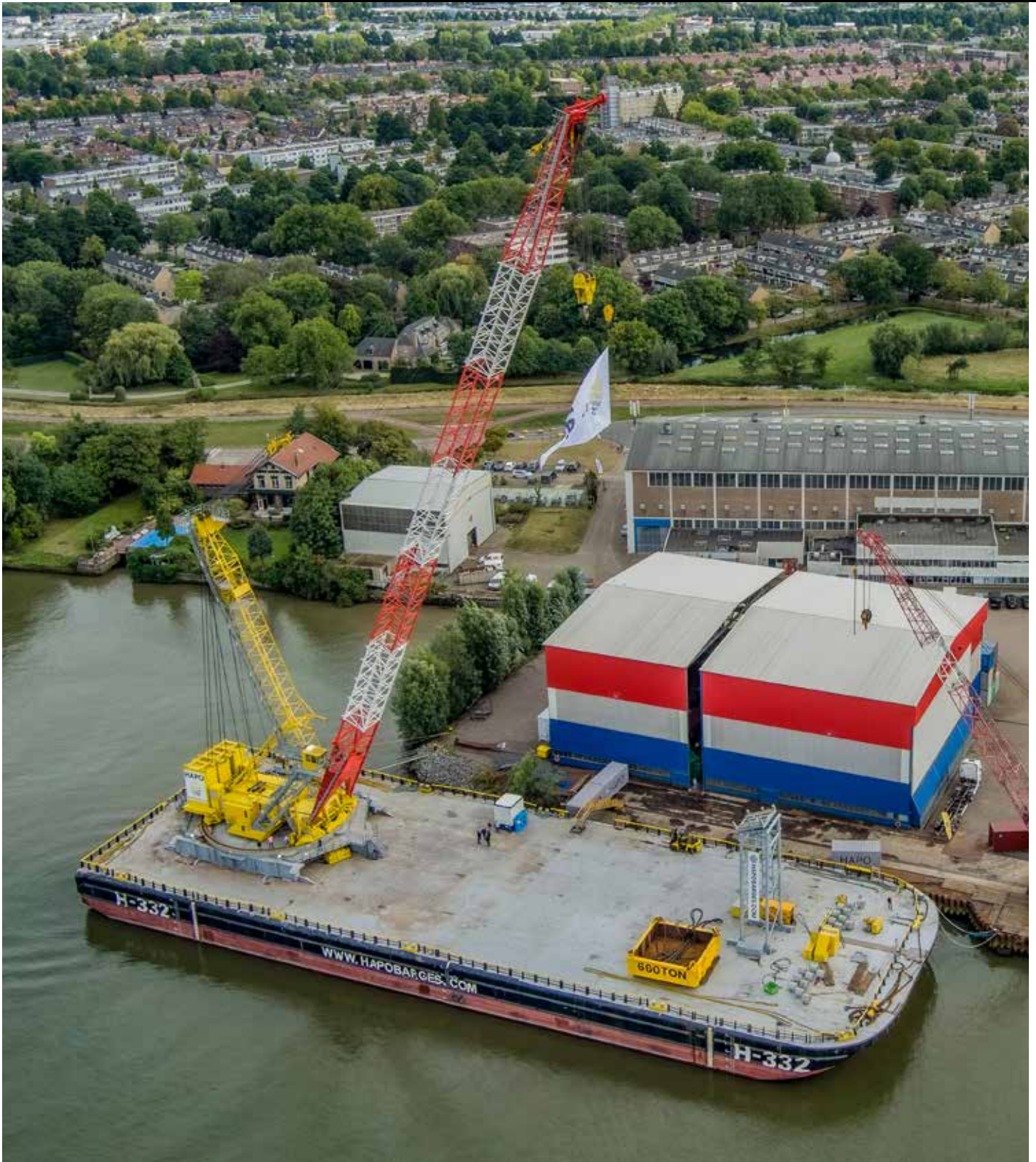
**Postal Address**

PO Box 5133  
3008 AC Rotterdam  
The Netherlands

CC: 23076161  
VAT: NL008589288B01

 +31 10 7600 111

 [info@hapobarges.com](mailto:info@hapobarges.com)

**Hapo International Barges B.V.**

Details believed to be correct, but not guaranteed. Specification subject to change without notice.

**Office Address**

Sluisjesdijk 145  
3087 AG Rotterdam  
The Netherlands

**Postal Address**

PO Box 5133  
3008 AC Rotterdam  
The Netherlands

CC: 23076161  
VAT: NL008589288B01

 +31 10 7600 111

 [info@hapobarges.com](mailto:info@hapobarges.com)



### **Office Address**

📍 Sluisjesdijk 145  
3087 AG Rotterdam  
The Netherlands

☎ +31 10 7600 111

✉ info@hapobarges.com

### **Postal Address**

✉ PO Box 5133  
3008 AC Rotterdam  
The Netherlands

### **Dirk-Jan Kuijt**

Chartering  
djkuijt@hapobarges.com

### **Johan Poot**

Director  
jpoot@hapobarges.com