

Spec Sheet

# Bulk Barge 1



# Bulk Barge 1



## Principal Particulars

Build	1980	Beam overall	12.42 m
Class notation	Inland	Depth	5.5 m
Flag	Dutch	Summer draft	3.4 m
GT	1023.83 t	Ligt ship weight	abt 500 t
Deadweight	1700 t	Deck space	370.7 m <sup>2</sup>
Lenght overall	58.08 m	Deckload	5 t/m <sup>2</sup>

## Deck Equipment

Bollards & chocks	4 x double bollard
Towing arr	2 x towing brackets

## Machinery

Generator	Generator driving electric and hydraulic pumps
-----------	--

## Hapo International Barges B.V.

Details believed to be correct, but not guaranteed. Specification subject to change without notice.

### Office Address

Sluisjesdijk 145  
3087 AG Rotterdam  
The Netherlands

### Postal Address

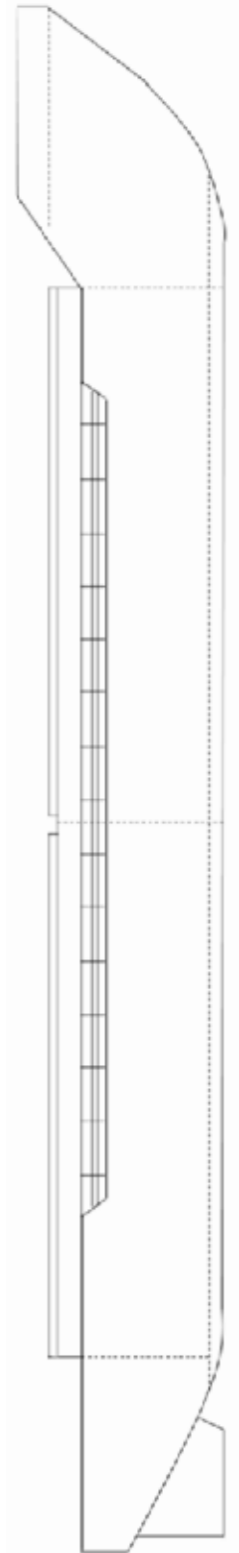
PO Box 5133  
3008 AC Rotterdam  
The Netherlands

CC: 23076161  
VAT: NL008589288B01

 +31 10 7600 111

 info@hapobarges.com

# Bulk Barge 1



## Hapo International Barges B.V.

Details believed to be correct, but not guaranteed. Specification subject to change without notice.

### Office Address

Sluisjesdijk 145  
3087 AG Rotterdam  
The Netherlands

### Postal Address

PO Box 5133  
3008 AC Rotterdam  
The Netherlands

CC: 23076161  
VAT: NL008589288B01

 +31 10 7600 111

 [info@hapobarges.com](mailto:info@hapobarges.com)

**Hapo International Barges B.V.**

Details believed to be correct, but not guaranteed. Specification subject to change without notice.

**Office Address**

Sluisjesdijk 145  
3087 AG Rotterdam  
The Netherlands

**Postal Address**

PO Box 5133  
3008 AC Rotterdam  
The Netherlands

CC: 23076161  
VAT: NL008589288B01

 +31 10 7600 111

 [info@hapobarges.com](mailto:info@hapobarges.com)



### **Office Address**

📍 Sluisjesdijk 145  
3087 AG Rotterdam  
The Netherlands

☎ +31 10 7600 111

✉ info@hapobarges.com

### **Postal Address**

✉ PO Box 5133  
3008 AC Rotterdam  
The Netherlands

### **Dirk-Jan Kuijt**

Chartering  
djkuijt@hapobarges.com

### **Johan Poot**

Director  
jpoot@hapobarges.com