

Spec Sheet

H-282 & SCX 5000



H-282 & SCX 5000



H-282 Principal Particulars

Build	1998	Beam overall	20.3 m
Class notation	Loyds Register ✕100 AN Pontoon	Depth	5.5 m
Flag	Panama	Summer draft	4.0 m
GT / NT	2473 t / 741 t	Ligt ship weight	1140 t
Deadweight	5430 t	Deck space	1680 m ²
Lenght overall	84.6 m	Deckload	15 t/m ²

H-282 Deck Equipment

Bollard & chocks	8 x double bollard SWL 28 t
Navigation lights	1 set of two lights. Solar powered
Anchor	1 x 2 t not installed

H-282 Machinery

Ballast system	All tanks ballastable with galvanised system
Ballast pump	2 x 600 m ³ /hr self priming diesel engine driven

Hapo International Barges B.V.

Details believed to be correct, but not guaranteed. Specification subject to change without notice.

Office Address

Sluisjesdijk 145
3087 AG Rotterdam
The Netherlands

Postal Address

PO Box 5133
3008 AC Rotterdam
The Netherlands

CC: 23076161
VAT: NL008589288B01

 +31 10 7600 111

 info@hapobarges.com

H-282 & SCX 5000



SCX 5000 Principal Particulars

Build	2003
Certification	TUV Nord / Aboma Keboma
Origin	Japan
Weight approx.	450 t to 500 t
Engine	Cummins KTTA19-C700 710 HP/2100 RPM
Fuel tank	850 L
Capacity	500 t @ 6 m to 10 t @ 80 m

SCX 5000 Dimensions

Length	11.5 m
Width	9.7 m
Height	5 m
Boom length H500	24 m to 67 m
Boom length L150	45 m to 100 m

Hapo International Barges B.V.

Details believed to be correct, but not guaranteed. Specification subject to change without notice.

Office Address

Sluisjesdijk 145
3087 AG Rotterdam
The Netherlands

Postal Address

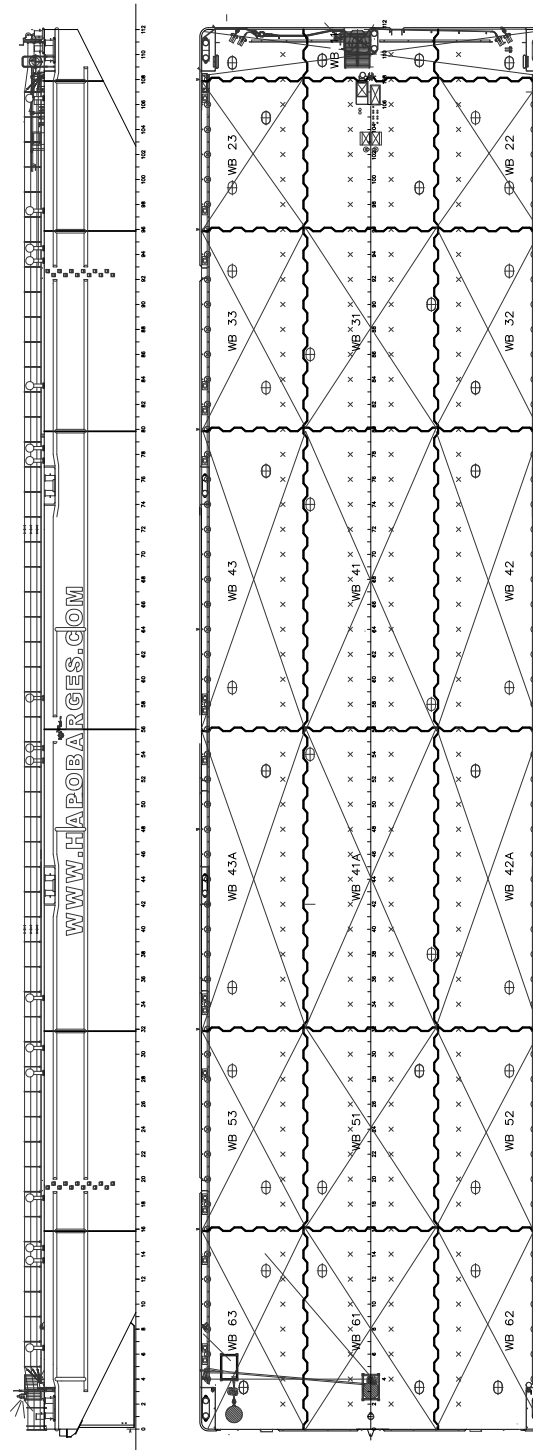
PO Box 5133
3008 AC Rotterdam
The Netherlands

CC: 23076161
VAT: NL008589288B01

 +31 10 7600 111

 info@hapobarges.com

H-282 & SCX 5000



Hapo International Barges B.V.

Details believed to be correct, but not guaranteed. Specification subject to change without notice.

Office Address

Sluisjesdijk 145
3087 AG Rotterdam
The Netherlands

Postal Address

PO Box 5133
3008 AC Rotterdam
The Netherlands

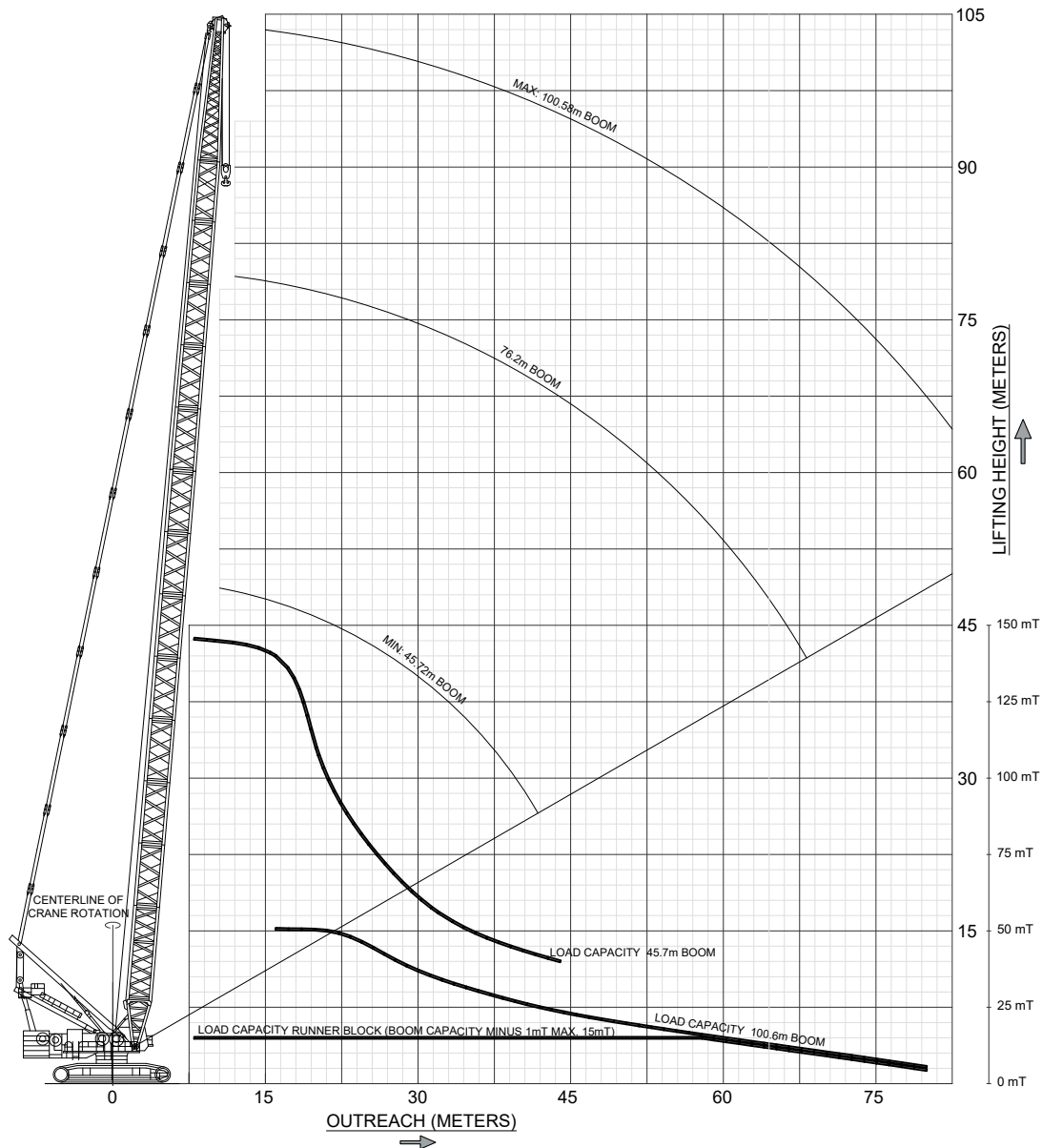
CC: 23076161
VAT: NL008589288B01

 +31 10 7600 111

 info@hapobarges.com

H-282 & SCX 5000

Capacity Chart for Crane "Hitachi-Sumitomo L150"



Hapo International Barges B.V.

Details believed to be correct, but not guaranteed. Specification subject to change without notice.

Office Address

Sluisjesdijk 145
3087 AG Rotterdam
The Netherlands

Postal Address

PO Box 5133
3008 AC Rotterdam
The Netherlands

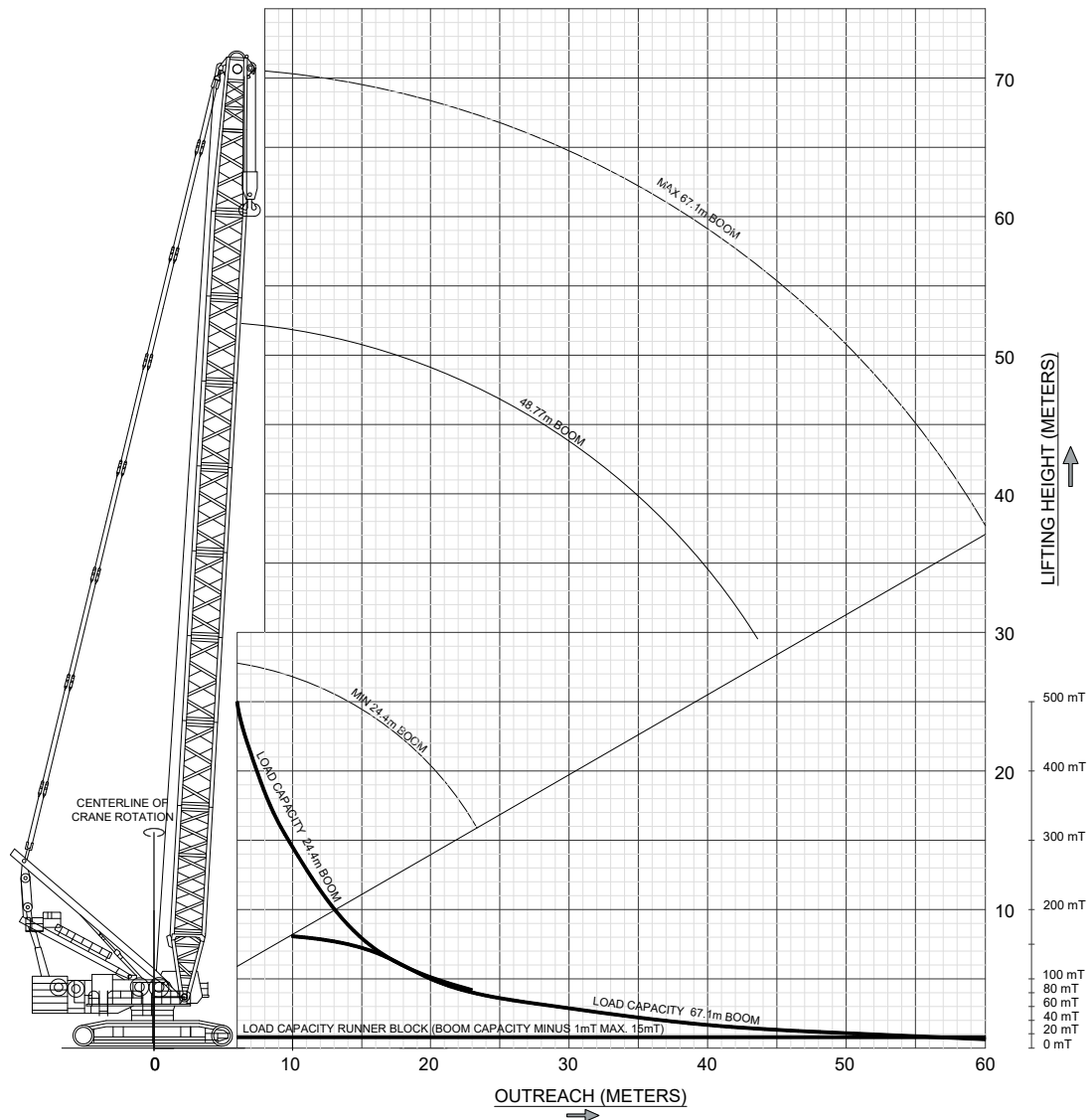
CC: 23076161
VAT: NL008589288B01

+31 10 7600 111

info@hapobarges.com

H-282 & SCX 5000

Capacity Chart for Crane "Hitachi-Sumitomo H500"



Hapo International Barges B.V.

Details believed to be correct, but not guaranteed. Specification subject to change without notice.

Office Address

Sluisjesdijk 145
3087 AG Rotterdam
The Netherlands

Postal Address

PO Box 5133
3008 AC Rotterdam
The Netherlands

CC: 23076161
VAT: NL008589288B01

+31 10 7600 111

info@hapobarges.com

**Hapo International Barges B.V.**

Details believed to be correct, but not guaranteed. Specification subject to change without notice.

Office Address

Sluisjesdijk 145
3087 AG Rotterdam
The Netherlands

Postal Address

PO Box 5133
3008 AC Rotterdam
The Netherlands

CC: 23076161
VAT: NL008589288B01

 +31 10 7600 111

 info@hapobarges.com

**Hapo International Barges B.V.**

Details believed to be correct, but not guaranteed. Specification subject to change without notice.

Office Address

Sluisjesdijk 145
3087 AG Rotterdam
The Netherlands

Postal Address

PO Box 5133
3008 AC Rotterdam
The Netherlands

CC: 23076161
VAT: NL008589288B01

 +31 10 7600 111

 info@hapobarges.com



Office Address

📍 Sluisjesdijk 145
3087 AG Rotterdam
The Netherlands

☎ +31 10 7600 111

✉ info@hapobarges.com

Postal Address

✉ PO Box 5133
3008 AC Rotterdam
The Netherlands

Dirk-Jan Kuijt

Chartering
djkuijt@hapobarges.com

Johan Poot

Director
jpoot@hapobarges.com